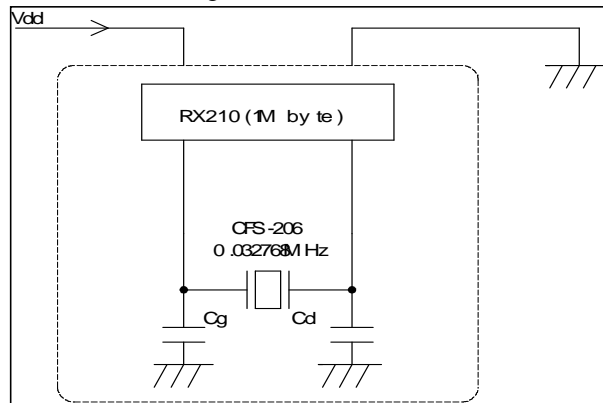


Investigation Report of Oscillation Circuit

*at Vdd=5.0V/25°C

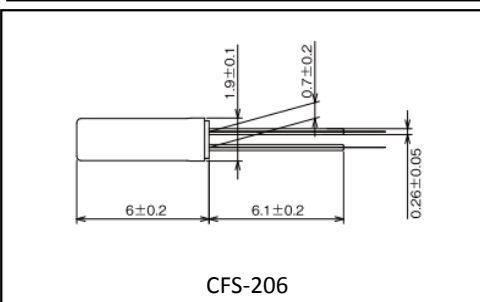
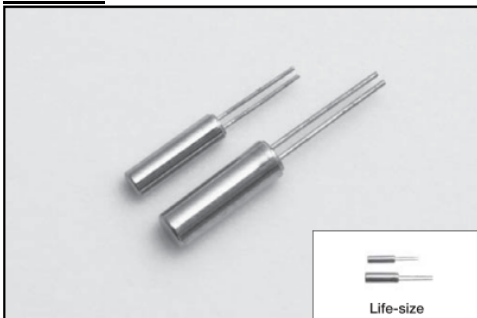
IC		RENESAS ELECTRONICS
		RX210(1M byte)
CRYSTAL		CFS-206
Nominal Frequency	kHz	32.768
Laod Capacitance	pF	12.5
Cg,Cd	pF	15 15
Negative Resistance (-R)	ohm	250k
Drive Level	μW	0.15
Startup Time	ms	40

* Our Recommendable Negative Resistance Value : over 150k ohm



*These recommendations are based on actual evaluation results and intended to support users in picking the right components. As the actual board layout and choice of external components influences the best suitable crystal load capacitance, we does not assume evaluation. Please refer to IC maker's manual for designing.

CFS-206



TUNING FORK CRYSTAL UNIT		
<ul style="list-style-type: none"> ■ Best suited for portable devices with low current consumption. ■ For a clock source in digital equipment. 		
Standard Specification		
Nominal Frequency	kHz	32.768
Frequency Tolerance	ppm	+/- 20 (at 25°C)
Operatating Temperature Rang	°C	-20 to 70
Storage Temperature Range	°C	-40 to 85
Motional Resistance	Ω	35k
Level of drive	uW	1 Max.
Insulation Resistance	MΩ	500 Min. (at DC100+/-15V)